



Mouse anti Human IgM Monoclonal Antibody

Alternative Name(s): Human IgM u-chain

Order Information

- **Description:** IgM (Hu)
- **Catalogue:** 605-910
- **Lot:** See label
- **Size:** 100ug/200ul
- **Host:** Mouse
- **Clone:** HP6083
- **Application:** IHC(P), WB, ELISA, FC
- **Reactivity:** Hu

ANTIGEN PREPARATION

Human immunoglobulin IgM

BACKGROUND

This is monoclonal anti-human IgM HP6083 antibody heavy chain secondary antibody. IgM is the largest antibody, and it is the first antibody to appear in the response to initial exposure to an antigen. Naive B cells express the transmembrane forms of IgM and IgD on their surface. IgM expression begins as soon as heavy and light chains recombine early in B cell development, and persists until class switch recombination occurs following B cell activation. The heavy and light chains are held together both by disulfide bonds and by non-covalent interactions. The μ heavy chain of IgM is a protein of ~576 amino acids, and includes a variable domain, four distinct constant region domains, and a "tailpiece". The μ heavy chain bears oligosaccharides at five asparagine residues. The spleen is necessary for development and function of IgM memory B cells.

PURIFICATION

The mouse IgG is purified by Protein A-Affinity Chromatography according to Isotyping

FORMULATION

This affinity purified antibody is supplied in sterile Phosphatebuffered saline (pH7.2) containing antibody stabilizer

SPECIFICITY

This antibody recognizes human IgM (Hu) protein. The other species are not tested.

STORAGE

The antibodies are stable for 24 months from date of receipt when stored at -20°C to -70°C . The antibodies can be stored at 2°C - 8°C for three month without detectable loss of activity. Avoid repeated freezing-thawing cycles.

APPLICATIONS/SUGGESTED WORKING DILUTIONS*

- Western Blot: 0.1-1 $\mu\text{g/ml}$
- ELISA: 0.01-0.1 $\mu\text{g/ml}$
- Immunoprecipitation: 2-5 $\mu\text{g/ml}$
- IHC: 2-10 $\mu\text{g/ml}$
- Flow cytometry: Not tested
- Molecular Weight: 970.0
- Positive Control: Kidney Tissue
- Cellular Location: Cell Membrane

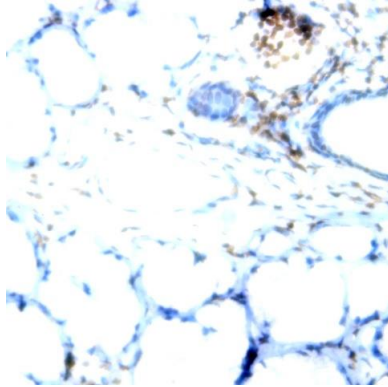
*Optimal dilutions should be determined by researchers for the specific applications.

FOR RESEARCH USE ONLY.

AbboMax, Inc 2528 Qume Drive, Suite 8, San Jose, California 95131, USA
1 408-573-1898 (Tel). 1 408-573-1858 (Fax). www.abbomax.com info@abbomax.com



DATA ATTACHMENTS



Immunohistochemistry: Human lung tissue (FFPE) stained with Mouse anti- IgM (Cat# 605-910) at 1:200 for 10 min @ RT. Staining of formalin-fixed tissue requires boiling tissue sections in 10 mM Citrate Buffer, pH 6.0 for 10 min followed by cooling at RT for 20 min.

REFERENCES

FOR RESEARCH USE ONLY.

AbboMax, Inc 2528 Qume Drive, Suite 8, San Jose, California 95131, USA
1 408-573-1898 (Tel). 1 408-573-1858 (Fax). www.abbomax.com info@abbomax.com